

HAPPY JACK ENDURANCE RIDE

JUNE 21ST AND JUNE 22ND, 2025

Located in the beautiful Vedauwoo area of Medicine Bow National Forest, 15 miles east of Laramie, WY and 30 miles west of Cheyenne, WY on Hwy 210, Happy Jack Road

TRAIL

- ✓ AERC 50 mile, 25 mile, and 10 mile rides offered each day
- ✓ AERC 2-day 100 mile ride is also being offered beginning on Day 1
- ✓ The ride is comprised of three loops. All holds are in camp
- ✓ Elevation at base camp is ~8,000 feet
- ✓ Hoof protection is highly recommended
- ✓ Expect great weather – or not! Be prepared for mountain weather and its inherent fluctuations such as sun, rain, hail and wind
- ✓ Buford, WY is the closest town for weather forecast information

DIRECTIONS

- ✓ Base camp is located on a well maintained forest road ~2 miles off Hwy 210
- ✓ From the North/South/East (Cheyenne): I-25 to exit 10, Hwy 210 aka Missile Drive aka Happy Jack Rd. Go west ~30 miles; left on Blair Wallis Rd (Forest Road 707); then 2 miles to ride camp on Forest Road 707D
- ✓ From the West (Laramie): I-80 past Laramie to exit 323, Hwy 210 aka Happy Jack Rd. Go left over the overpass, then an immediate left onto Happy Jack Rd; ~5 miles to Blair Wallis Rd (Forest Rd 707) on the right. 2 miles to ride camp on Forest Road 707D

ENTRY INFO

- ✓ Please pre-register. Pre-payment is not required
- ✓ Find pre-registration info on the 'Happy Jack Endurance Ride' facebook page
- ✓ \$225 entry fee for the 2-day 100 mile ride
- ✓ \$125 entry fee for the 25 and 50 mile rides
- ✓ \$60 entry fee for the 10 mile Intro
- ✓ \$20 day use fee per day if not an AERC member (25, 50, and 100 mile distances only)

SCHEDULE

- ✓ Ride camp opens Friday at noon and closes Monday afternoon
- ✓ Horse water is not available before Friday at noon
- ✓ Vetting begins Friday afternoon around 3:00 pm
- ✓ A detailed schedule will be posted on the 'Happy Jack Endurance Ride' facebook page prior to the ride

FOOD AND GAS

- ✓ The closest gas stations and grocery stores are in Laramie or Cheyenne
- ✓ Horse water is provided. Bring your own people water
- ✓ Dinner for riders is provided on Saturday. Lunch for riders is provided on Sunday. \$10 for extra meals

ADDITIONAL INFO

- ✓ Health certificates are required for out-of-state horses. The address is:
Forest Road 707D
Medicine Bow National Forest
Buford, WY 82052
- ✓ The roads and base camp areas are suitable for large rigs
- ✓ GPS coordinates of basecamp are: 41.216495, -105.384052
- ✓ Dogs are welcome. Keep them under control and away from vetting and common areas

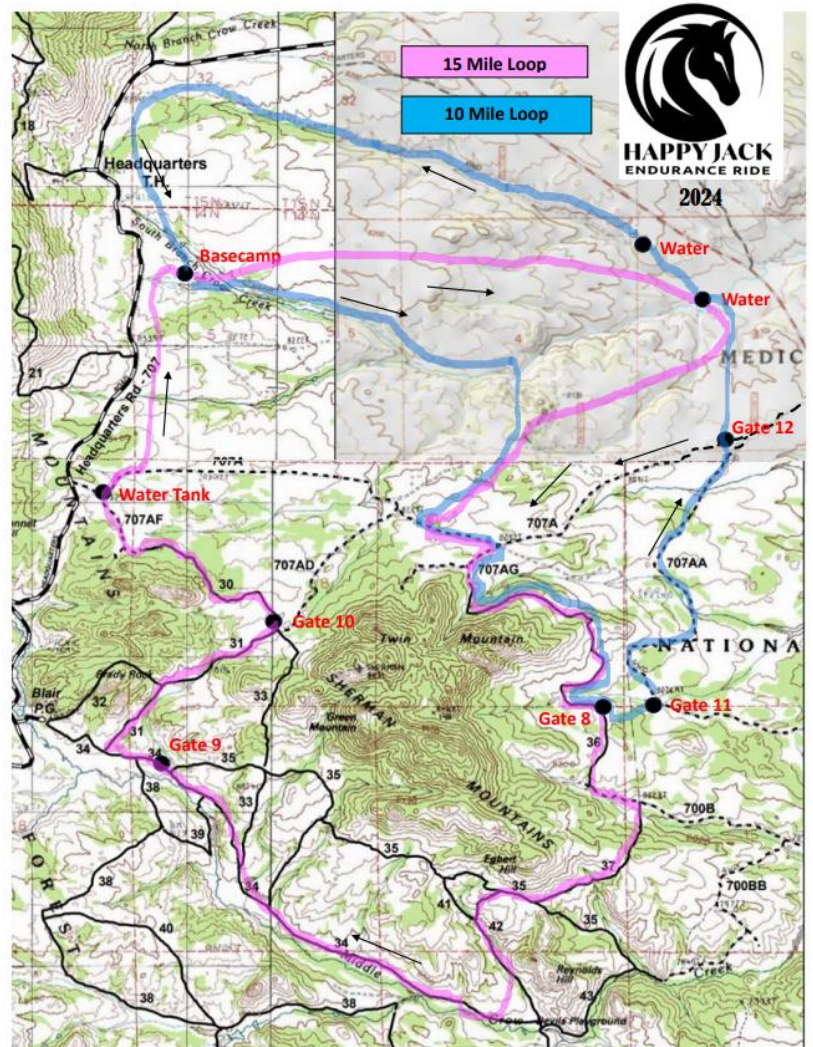
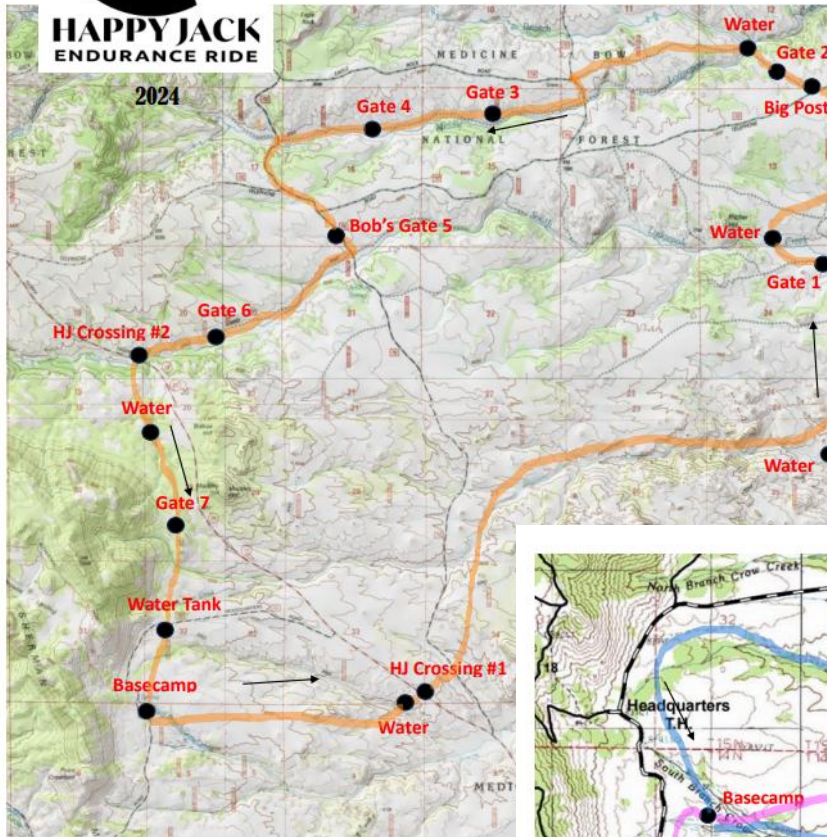
BASE CAMP

- ✓ Base Camp and trails are in Medicine Bow National Forest. Please familiarize yourself with National Forest camping rules
- ✓ You MUST park your rig within 100 feet of the forest road. No exceptions. Do NOT create new lanes. Stick to the existing roads
- ✓ To ensure room for all, park perpendicular to the road and setup your horse corral behind rather than beside the trailer. The corral does not need to be within 100 feet of the road. High ties may also be used
- ✓ The Back Country Horsemen horse corrals are also available; first come-first-served. Corrals are open to all -- event and non-event visitors alike
- ✓ Overflow parking/camping areas will be utilized if needed, with horse water available
- ✓ You must NOT camp on the creek side (the north side) of Forest Rd 707D at base camp
- ✓ Weed free hay is required
- ✓ Scatter manure. Pick up excess hay. Leave your campsite tidy and trash-free

SAMPLE TRAIL MAP (EXPECT MINOR UPDATES FOR 2025)

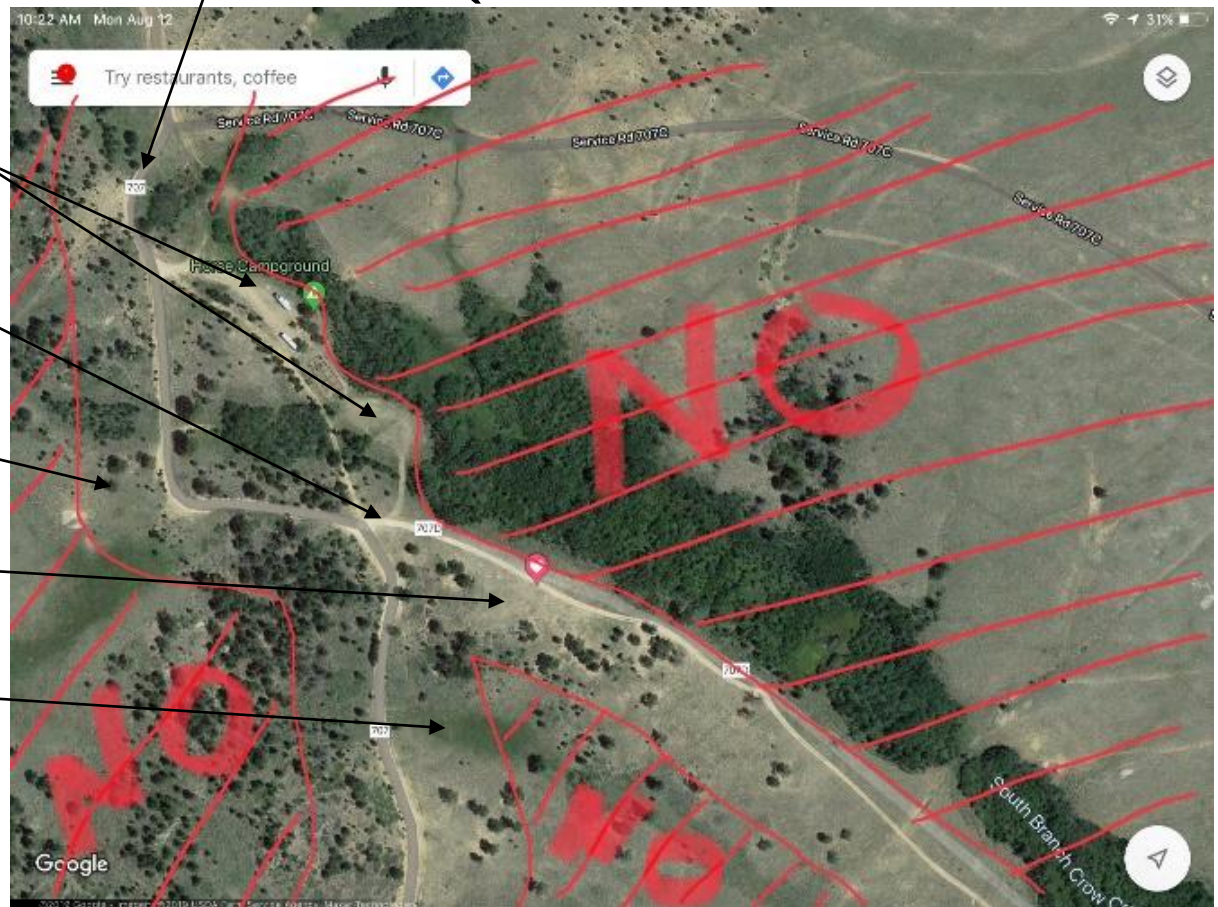


25 Mile Loop



CAMP AREA

You are heading south on Forest Rd 707, entering camp here



Horse Corral Parking Areas

Main Parking is along 707D

Overflow #1

Vet, Timing, P&R Areas

Overflow #2