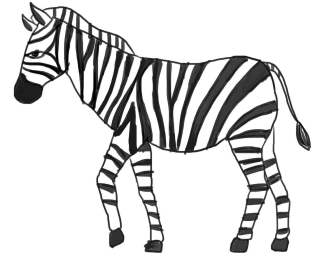




April 14 & 15, 2023

FRIDAY April 14 - 55 mile, 30 mile & Intro
SATURDAY April 15 - 75 mile, 50 mile, 25 mile, & Intro



Priefert Ranch, Mt. Pleasant, Texas

AERC Sanctioned & TERA Sanctioned

Mandatory 75 mile Pre-Registration with payment by April 1, 2023

Ride Manager: Khristin Seymore-Norsworthy - 903-563-6639 - HorizonAggie@aol.com

Assistant Ride Manager/Trail Master: Ryan Norsworthy - 903-285-1637

DAY MANAGER/Ride Secretary ON-SITE ONLY: Samm Bartee

Online entry link: <https://form.jotform.com/OakTreeCC/racingstripes2023>

Highly suggest to JOT FORM to enter ride. There will be an ON-SITE Registration FEE

Head Veterinarian: Dennis Seymore, DVM

Control Veterinarians: Carter Hounsel, DVM, TBD

Event Photographer: John Nowell

Website: www.remudasmugmug.com

Farrier: Chad

Registration Rules:

- ★ *****Mandatory 75 mile Pre-Registration with payment by April 1, 2023*****
 - MUST HAVE **11** ENTRIES REGISTERED & PAID FOR DISTANCE TO MAKE!
- ★ I highly suggest PRE-REGISTER with the JOTFORM prior to arrival!!
 - **<https://form.jotform.com/OakTreeCC/racingstripes2023>**
- ★ IF you decide to register on site there will be a on-site FEE and it will be a SELF check-in registration.
- ★ If you have any questions or need to make changes regarding your submitted entry please contact me; horizonaggie@aol.com
- ★ If you choose the **PAPER** entry option then you will be entering ON-SITE!
- ★ All PayPal; please send to: horizonaggie@aol.com
- ★ If you plan to write a **check** or pay **cash** after entering the JotForm then please mail to:
 - 151 CR 4100, Daingerfield, TX 75638
 - ALL checks payable to: Khristin Seymore-Norsworthy
- ★ ALL refunds will be dealt with after the event; the following week.

Endurance riding is an athletic event for both horse and rider in which the first goal is to complete the marked trails; and the second goal is to ride this trail as rapidly as the condition of horse and rider allows. A qualified veterinarian and ride manager controls each AERC sanctioned ride to a certain extent. All equines must pass the thorough vet checks before and during the event before they are allowed to continue. After the ride, the equine must pass another thorough check before being allowed a completion.

Campsite: Located among the rolling green hills on the outskirts of Mt. Pleasant, Texas, the Priefert Ranch is a family-owned and operated 3,000-acre working ranch. History about the ranch: The ranch runs a cow/calf operation and is also involved in the commercial hay business. Priefert Ranch is also home to several horses. Two of these magnificent horses are Goliath and Radar, both Guinness World Record holders for Tallest Living Horse. The Priefert Percherons Texas Thunder draft horse hitch is also based on the ranch. It was on this ranch in 1964, that Marvin Priefert built his first headgate. That single piece of ranch equipment became the foundation of one of the of the largest and most respected ranch equipment manufacturing companies in the world. Although Priefert's manufacturing facilities have expanded over the years, the one room shop where Marvin invented his revolutionary side-closing headgate still stands on the ranch and serves as a vivid reminder of where this company has its roots. Today's manufacturing facilities are located adjacent to the ranch, allowing Priefert Ranch to be the first proving ground for the vast majority of Priefert's products. That's why we say Priefert products are "built by ranchers, for ranchers."

Trails: The terrain here is flat to gently rolling hills. Trails will go through cattle pastures, creek crossings, and some ravines. All vet checks will be in camp: loop lengths, hold times, and veterinary criteria will be discussed at the pre-ride meeting. Trails are very barefoot friendly! *This is a cattle working ranch, you will ride though many cow pastures in which cows may or may not be present!

Intro Riders: The Intro Ride offers an opportunity for newcomers (riders and/or equines) to see what endurance is all about. Intro riders will complete a loop of approximately 10 - 15 miles and have a pre-and post-ride vet check. There is no minimum or maximum time for completion. There are no point or mileage accumulations, no placement awards, no best condition judging, nor are results reported to AERC. However if your horse successfully completes the ride, you will receive a completion award and have had the opportunity to experience the sport of endurance.s

* Intro Riders are required to have a current, negative coggins. If you do not plan to camp Friday night, but plan to ride Saturday please attend the Friday Night Pre-Ride Meeting because it will be very beneficial in understanding the sport and outline of the ride.

Directions:

- Route yourself with your own directions to Mt. Pleasant, Texas.
- Upon approaching Mt. Pleasant, TX; From the SOUTH continue on HWY 271 North (DO NOT TAKE HWY 271 BUSINESS!!). After merging and heading towards Hwy 271 N & I-30 then take the 4000 FM Marvin Priefert Hwy Exit. You will then come to a STOP sign, take a LEFT (going under 271) and head directly into the Priefert Ranch. Follow parking directions.
- Upon approaching Mt. Pleasant, TX; From the NORTH continue on HWY 271 South (DO NOT TAKE HWY 271 BUSINESS!!). After merging and heading towards Hwy 271 S you will take the 4000 FM Marvin Priefert Hwy Exit. You will then come to a STOP sign, take a RIGHT and head directly into the Priefert Ranch. Follow parking directions.
- Upon approaching Mt. Pleasant, TX; If traveling on I-30 exit# 160 onto Hwy 271 South, continue on HWY 271 South (DO NOT TAKE HWY 271 BUSINESS!!). After merging and heading towards Hwy 271 S you will take the 4000 FM Marvin Priefert Hwy Exit. You will then come to a STOP sign, take a RIGHT and head directly into the Priefert Ranch. Follow parking directions.
- If you plan to arrive Wednesday or before Wednesday please call ride management so she can be available to get you parked. PLEASE CALL Khristin @ 903-563-6639!

Schedule: ** Times are subject to change if needed!! **

Thursday April 13, 2023	Friday April 14, 2023	Saturday April 15, 2023
		6:30 AM - 75 mile Start
	7:00 AM - 55 mile Start	7:00 AM - 50 mile Start
1:00 PM - Self-Registration Open!	7:30 AM - 30 mile Start	7:30 AM - 25 mile Start
4:00 PM - Vet-in Starts	9:00 AM - Intro Ride Start	9:00 AM - Intro Ride Start
6:00 PM Pre-Ride Meeting - See handout!	6:00 PM -Awards	AWARDS - listen for HORN (might be after each distance)

Racing Stripes

Mt. Pleasant, Texas



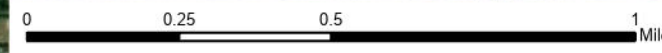
Course Map

2023

Priefert
Ranch Equipment



Blue Loop - 16 miles



Racing Stripes

Mt. Pleasant, Texas



Course Map

2023

Priefert
Ranch Equipment

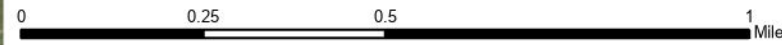
FM3417

Steel Bridge

Start

Finish

Red Loop - 12 miles



Racing Stripes

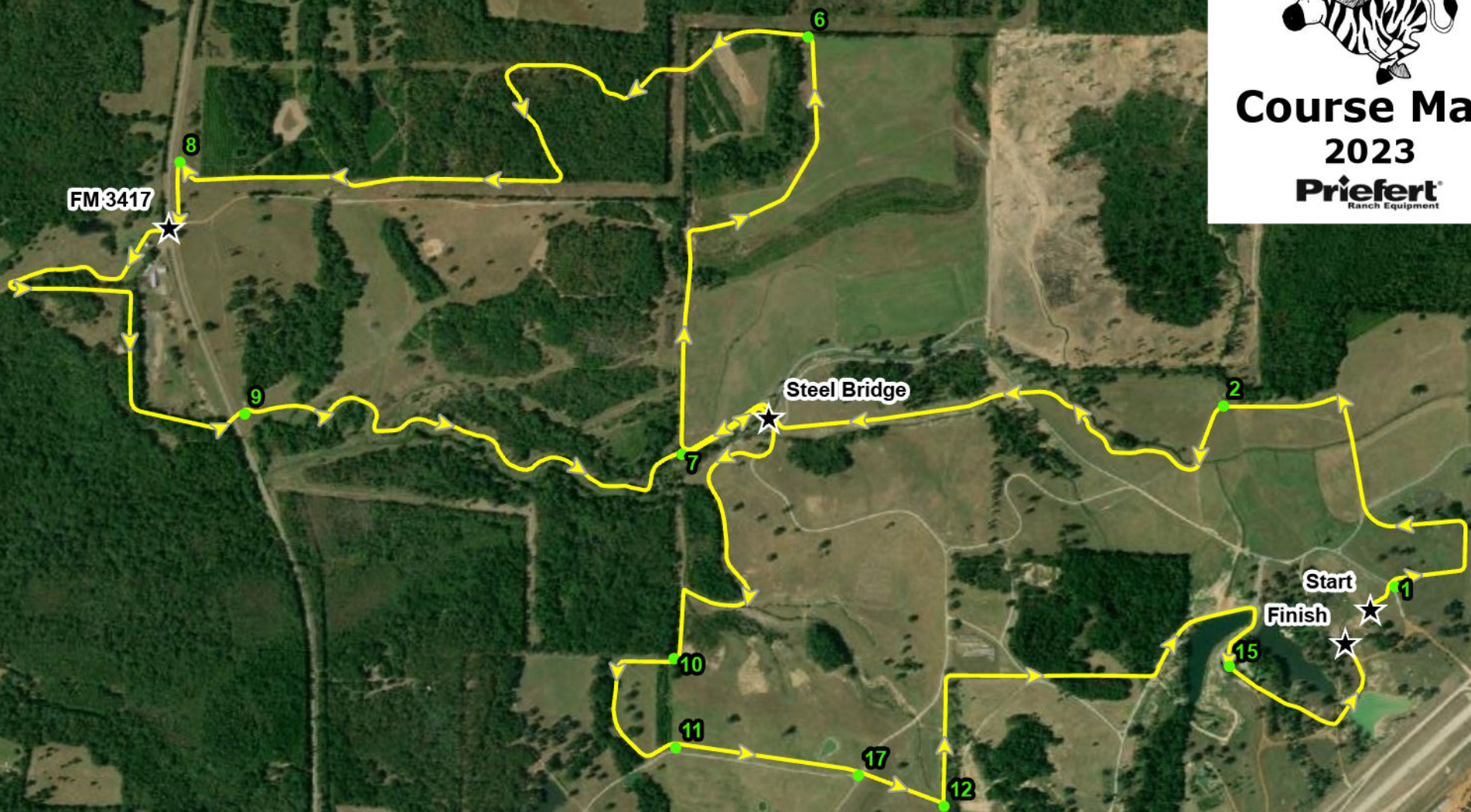
Mt. Pleasant, Texas



Course Map

2023

Priefert
Ranch Equipment



Yellow Loop - 9 miles

