

AERC TRAIL GRANT  
BIG HILL LAKE  
February 8, 2019

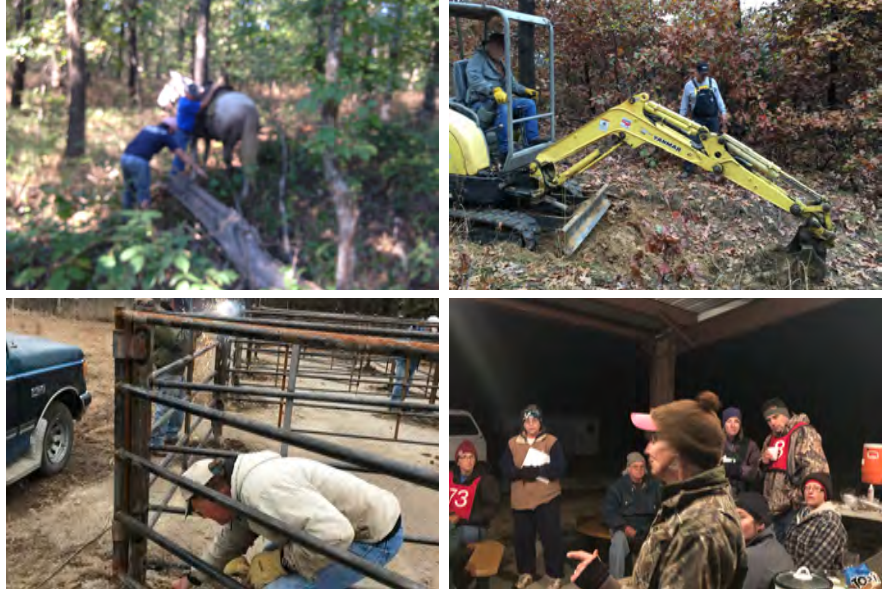
## HANDSHAKE GRANT COMPLETED



Thanks to a \$500 Trail Grant from AERC, a large group pavilion was completed October, 2018 at the Big Hill Lake Cherryvale Equestrain Camp. The building, as well as other trail improvements were completed under a Handshake Grant where partners team up with the Corp of Engineers to improve facilities. AERC was one of the six partners on the project that eventually accomplished nearly \$18,000 worth of upgrades.

**“The partners really came through for the Handshake Grant. They exceeded our expectations.”**

(Chris Hammerschmidt, Big Hill Lake Project Manager



The group pavilion was purchased, in part, with AERC monies, and greatly enhances the site for putting on AERC rides as it serves as a meeting and eating facility and frees rides management from setting up tents and makeshift portable shelters.

The six partners, including NATRC, Back Country Horsemen, and diverse groups such as the Labette County Tourism and local Boy Scouts worked together to raise funds and re-measure and permanently mark all trail heads and set trail makers every quarter mile on the 19 miles of trail. Because of the funds collected, extra projects were completed in addition to the pavilion, including 20 pipe pens in the north horse camp.

Without the support of the AERC Trail Committee and its generous grant, these significant improvements might not have been accomplished. Corp management is in the process of obtaining a plaque, to be attached to the pavilion acknowledging the contributions of all partners, listing AERC as a valued partner.

The next project for the volunteers and the park will be to GPS map all trails and erect map signage at each Equestrain campground. Ideally, a map, available for download will also be posted on the facility web page.

THANKS to AERC for being an important contributor.